



Catalogue
the "X" collections
Design & Architectural lighting

Index

- pag. 08 X1A Ø 7,0
- 10 X1B Ø 8,5
- 12 X2A Ø 7,0
- 14 X2B Ø 8,5
- 16 X3A Ø 7,0
- 16 X3B Ø 8,5
- 18 X4A 7,0x7,0
- 20 X4B 8,5x8,5
- 22 X5B

- 26 X7R Ø 8,5

- 36 X-Gun 1 Ø 3,0
- 38 X-Gun 2 Ø 4,3
- 40 X-Gun 3 Ø 5,0
- 42 X-Gun 4 Ø 6,0
- 44 X-Dark
- 46 X-Line
- 30 X-Rail system
- 48 X-Rail pendant
(Bijoux, C'est moi, C'est Toi, Chapeau, Chérie, Petit)
- 52 X-Running

Recessed trimless Recessed with trim



X1A Ø 7,0 p.08



X1B Ø 8,5 p.10



X2A Ø 7,0 p.12



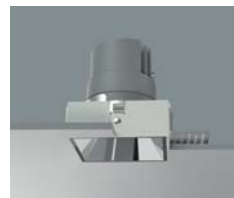
X2B Ø 8,5 p.14



X3A Ø 7,0 p.16



X3B Ø 8,5 p.16



X4A 7,0x7,0 p.18



X4B 8,5x8,5 p.20



X5B p.22

Ceiling



X7R Ø 8,5 p.26



X7R Ø 8,5 p.28

Projectors for 48V magnet track



X-Gun 1 Ø 3,0 p.36



X-Dark p.44



X-Gun 2 Ø 4,3 p.38



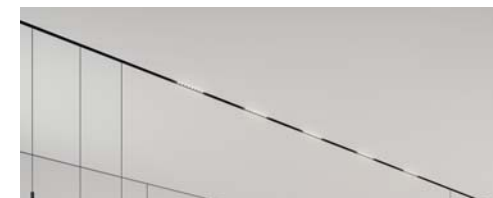
X-Line p.46



X-Gun 3 Ø 5,0 p.40



X-Gun 4 Ø 6,0 p.42



X-Rail pendant
Bijoux, C'est moi, C'est Toi, Chapeau, Chérie, Petit p.48

Pendant



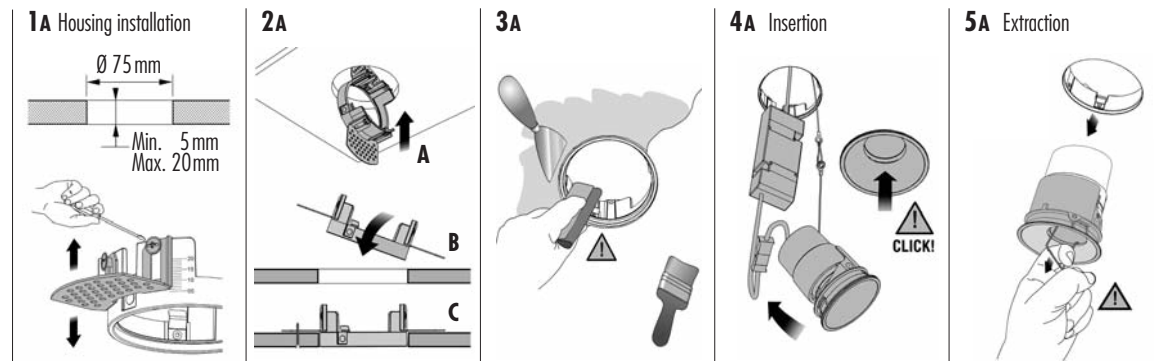
X-Running p.56



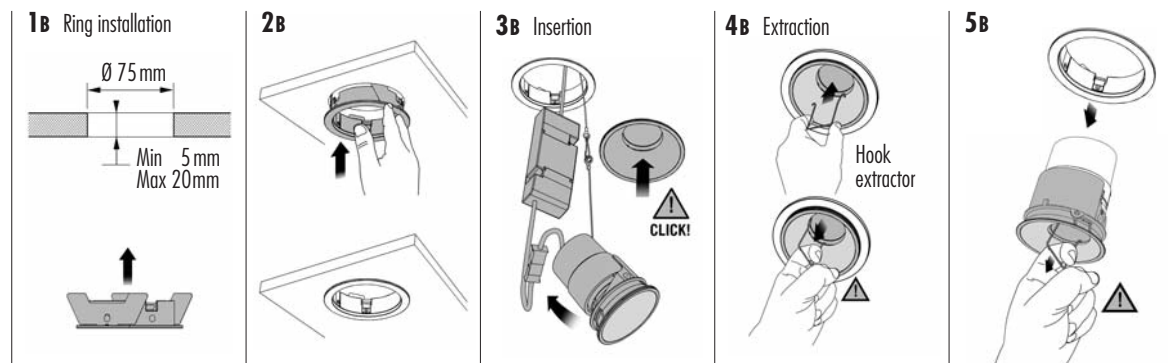
X-Running Cup p.54

X1 - X2 - X3 - X4 (A-B)

XA: trimless



XB: with trim



Series XA
trimless



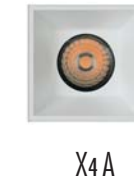
X1 A



X2 A



X3 A



X4 A

Series XB
with trim



X1 B



X2 B



X3 B



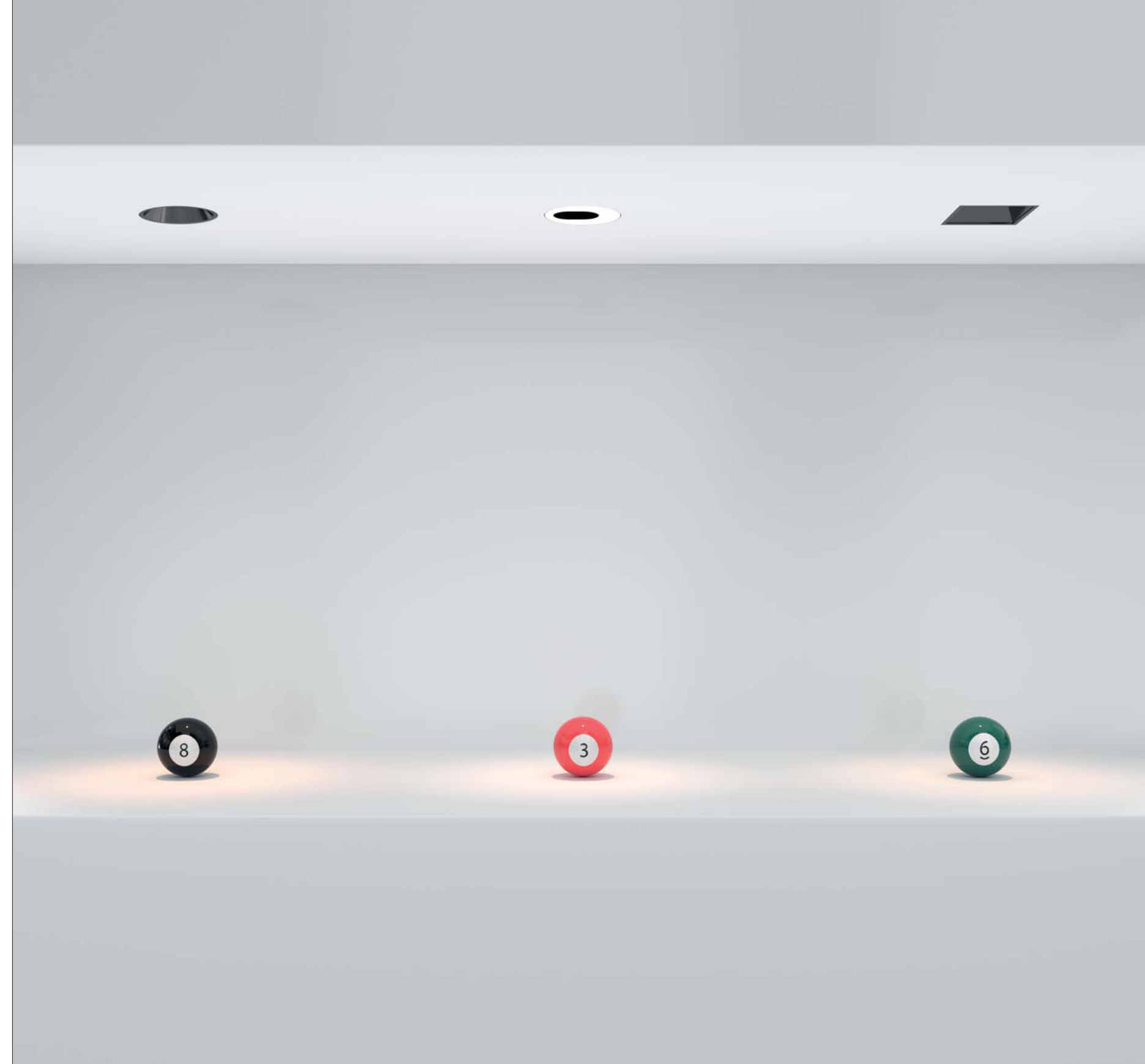
X4 B

Visual comfort lighting

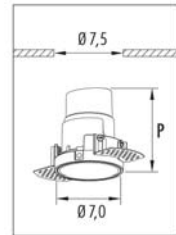
A study was applied to the minimalist design to increase the visual comfort, reducing glare (UGR <19) thanks to optics with non-reflective finishes.

The "Easy" technology allows - when needed - to replace the light source without removing the structure while keeping the ceiling intact.

The application possibilities of these items go from residential use to contract market, from installation in offices as well as in hotels.



X1A Ø 7,0 trimless (only for plasterboard)



UGR<19



02 Black



06 White



CH Chrome



CB Black Chrome



GD Gold

	X1A	P
3X1A.210.□	GU10 led	—
3X1A.K■▲□	led 9,5W	13,0
3X1A.x2■S.□	led 8,0W	8,9

IP40 CE
 220V ÷ 240V
 3X1A.210.□ GU10 led

IP40 Flicker < 20% CE
 220V ÷ 240V LED 9,5W CRI>90
 3X1A.K■▲□ dimm IGBT - TRIAC
 ■ Led color Nominal lm ▲ Beam spread
 2 = 2700°K 834 M = 36°
 3 = 3000°K 877 S = 24°

IP40 © MC-E=3 CE
 200m/A LED 8W CRI>95 Driver included
 3X1A.02■S.□ ON/OFF
 3X1A.E2■S.□ DALI - Push
 3X1A.G2■S.□ 0...10V
 3X1A.D2■S.□ dimm IGBT - TRIAC
 ■ Led color Nominal lm ▲ Beam spread
 2 = 2700°K 829 24°
 3 = 3000°K 872

Housing for plasterboard Ø 7,5cm

● 1X00.OXA.01

Option: Honeycomb cover Ø 3,8 cm

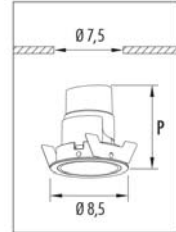
1XG3.H50.02

Option: Striped glass Ø 3,8 cm

1XG3.G50.ST



X1B Ø 8,5 with trim (for plasterboard)



UGR<19



□ 22 Black + Black □ 26 Black + White



□ 2H Black + Chrome □ 2B Black + Black Chrome □ 2G Black + Gold

	X1B	P
3X1B.210.□	GU10 led	—
3X1B.K■▲.□	led 9,5W	13,0
3X1B.x2■S.□	led 8,0W	8,9

IP40	CE	▽	□
220V ÷ 240V			
3X1B.210.□			GU10 led

IP40	Flicker < 20%	CE	▽	□
220V ÷ 240V				
3X1B.K■▲.□				LED 9,5W CRI>90 dimm IGBT - TRIAC

Led color	Nominal lm	Beam spread
2 = 2700°K	834	M = 36°
3 = 3000°K	877	S = 24°

IP40	MC-E=3	CE	▽	⊕
200m/A				
3X1B.02■S.□				LED 8W CRI>95 Driver included

3X1B.E2■S.□	ON/OFF
3X1B.E2■S.□	DALI - Push
3X1B.G2■S.□	0...10V
3X1B.D2■S.□	dimm IGBT - TRIAC

Led color	Nominal lm	Beam spread
2 = 2700°K	829	24°
3 = 3000°K	872	

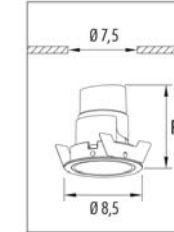
Option: Honeycomb cover Ø 3,8 cm

1XG3.H50.02

Option: Striped glass Ø 3,8 cm

1XG3.G50.ST

X1B Ø 8,5 with trim (for plasterboard)



UGR<19



□ 62 White + Black □ 66 White + White



□ 6H White + Chrome □ 6B White + Black Chrome □ 6G White + Gold

	X1B	P
3X1B.210.□	GU10 led	—
3X1B.K■▲.□	led 9,5W	13,0
3X1B.x2■S.□	led 8,0W	8,9

IP40	CE	▽	□
220V ÷ 240V			
3X1B.210.□			GU10 led

IP40	Flicker < 20%	CE	▽	□
220V ÷ 240V				
3X1B.K■▲.□				LED 9,5W CRI>90 dimm IGBT - TRIAC

Led color	Nominal lm	Beam spread
2 = 2700°K	834	M = 36°
3 = 3000°K	877	S = 24°

IP40	MC-E=3	CE	▽	⊕
200m/A				
3X1B.02■S.□				LED 8W CRI>95 Driver included

3X1B.E2■S.□	ON/OFF
3X1B.E2■S.□	DALI - Push
3X1B.G2■S.□	0...10V
3X1B.D2■S.□	dimm IGBT - TRIAC

Led color	Nominal lm	Beam spread
2 = 2700°K	829	24°
3 = 3000°K	872	

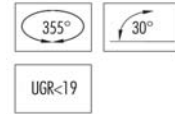
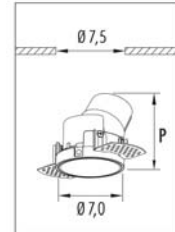
Option: Honeycomb cover Ø 3,8 cm

1XG3.H50.02

Option: Striped glass Ø 3,8 cm

1XG3.G50.ST

X2A Ø 7,0 trimless (only for plasterboard)



02 Black



06 White



CH Chrome



CB Black Chrome



GD Gold

	X2A	P
3X2A.210.□	GU10 led	—
3X2A.K■▲.□	led 9,5W	13,0
3X2A.x2■S.□	led 8,0W	8,9

IP40 CE
 220V ÷ 240V
 3X2A.210.□ GU10 led

IP40 Flicker < 20% CE
 220V ÷ 240V LED 9,5W CRI>90
 3X2A.K■▲.□ dimm IGBT - TRIAC
 ■ Led color Nominal lm ▲ Beam spread
 2 = 2700°K 834 M = 36°
 3 = 3000°K 877 S = 24°

IP40 © MC-E=3 CE
 200m/A LED 8W CRI>95 Driver included
 3X2A.02■S.□ ON/OFF
 3X2A.E2■S.□ DALI - Push
 3X2A.G2■S.□ 0...10V
 3X2A.D2■S.□ dimm IGBT - TRIAC
 ■ Led color Nominal lm ▲ Beam spread
 2 = 2700°K 829 24°
 3 = 3000°K 872

Housing for plasterboard Ø 7,5cm

● 1X00.OXA.01

Option: Honeycomb cover Ø 3,8 cm

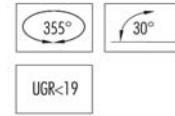
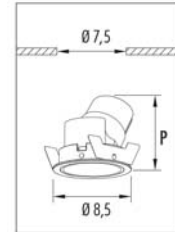
1XG3.H50.02

Option: Striped glass Ø 3,8 cm

1XG3.G50.ST



X2B Ø 8,5 with trim (for plasterboard)



□ 22 Black + Black □ 26 Black + White



□ 2H Black + Chrome □ 2B Black + Black Chrome □ 2G Black + Gold

	X2B	P
3X2B.210.□	GU10 led	—
3X2B.K■▲.□	led 9,5W	13,0
3X2B.x2■S.□	led 8,0W	8,9

IP40	CE	V	□
220V ÷ 240V			
3X2B.210.□			GU10 led

IP40	Flicker < 20%	CE	V	□
220V ÷ 240V				
3X2B.K■▲.□				LED 9,5W CRI>90 dimmm IGBT - TRIAC

Led color	Nominal lm	Beam spread
2 = 2700°K	834	M = 36°
3 = 3000°K	877	S = 24°

IP40	MC-E=3	CE	V	⊕
200m/A				
3X2B.02■S.□				LED 8W CRI>95 Driver included

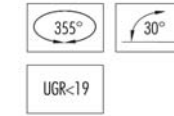
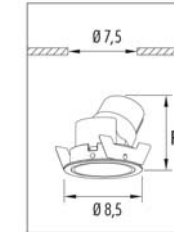
3X2B.E2■S.□	ON/OFF
3X2B.E2■S.□	DALI - Push
3X2B.G2■S.□	0...10V
3X2B.D2■S.□	dimmm IGBT - TRIAC

Led color	Nominal lm	Beam spread
2 = 2700°K	829	24°
3 = 3000°K	872	

Option: Honeycomb cover Ø 3,8 cm
1XG3.H50.02

Option: Striped glass Ø 3,8 cm
1XG3.G50.ST

X2B Ø 8,5 with trim (for plasterboard)



□ 62 White + Black □ 66 White + White



□ 6H White + Chrome □ 6B White + Black Chrome □ 6G White + Gold

	X2B	P
3X2B.210.□	GU10 led	—
3X2B.K■▲.□	led 9,5W	13,0
3X2B.x2■S.□	led 8,0W	8,9

IP40	CE	V	□
220V ÷ 240V			
3X2B.210.□			GU10 led

IP40	Flicker < 20%	CE	V	□
220V ÷ 240V				
3X2B.K■▲.□				LED 9,5W CRI>90 dimmm IGBT - TRIAC

Led color	Nominal lm	Beam spread
2 = 2700°K	834	M = 36°
3 = 3000°K	877	S = 24°

IP40	MC-E=3	CE	V	⊕
200m/A				
3X2B.02■S.□				LED 8W CRI>95 Driver included

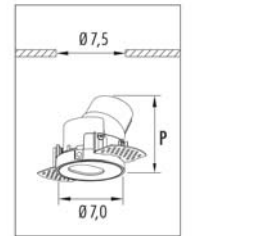
3X2B.E2■S.□	ON/OFF
3X2B.E2■S.□	DALI - Push
3X2B.G2■S.□	0...10V
3X2B.D2■S.□	dimmm IGBT - TRIAC

Led color	Nominal lm	Beam spread
2 = 2700°K	829	24°
3 = 3000°K	872	

Option: Honeycomb cover Ø 3,8 cm
1XG3.H50.02

Option: Striped glass Ø 3,8 cm
1XG3.G50.ST

X3A Ø 7,0 trimless (only for plasterboard)



06 White

	X3A	P
3X3A.210.□	GU10 led	—
3X3A.K■▲.□	led 9,5W	13,0
3X3A.x2■S.□	led 8,0W	8,9

IP40 ☒ CE ▽ □

220V ÷ 240V

3X3A.210.06 GU10 led

IP40 Flicker < 20% CE ▽ □

220V ÷ 240V

3X3A.K■▲.06 dimm IGBT - TRIAC

Led color	Nominal lm	Beam spread
2 = 2700°K	834	M = 36°
3 = 3000°K	877	S = 24°

IP40 ☉ MC-E=3 CE ▽ □

200m/A

3X3A.02■S.06 ON/OFF

3X3A.E2■S.06 DALI - Push

3X3A.G2■S.06 0...10V

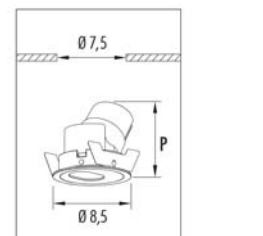
3X3A.D2■S.06 dimm IGBT - TRIAC

Led color	Nominal lm	Beam spread
2 = 2700°K	829	24°
3 = 3000°K	872	

Housing for plasterboard ⤷ Ø 7,5cm

● 1X00.0XA.01

X3B Ø 8,5 with trim (for plasterboard)



06 White

	X3B	P
3X3B.210.□	GU10 led	—
3X3B.K■▲.□	led 9,5W	13,0
3X3B.x2■S.□	led 8,0W	8,9

IP40 ☒ CE ▽ □

220V ÷ 240V

3X3B.210.06 GU10 led

IP40 Flicker < 20% CE ▽ □

220V ÷ 240V

3X3B.K■▲.06 dimm IGBT - TRIAC

Led color	Nominal lm	Beam spread
2 = 2700°K	834	M = 36°
3 = 3000°K	877	S = 24°

IP40 ☉ MC-E=3 CE ▽ □

200m/A

3X3B.02■S.06 ON/OFF

3X3B.E2■S.06 DALI - Push

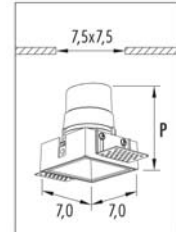
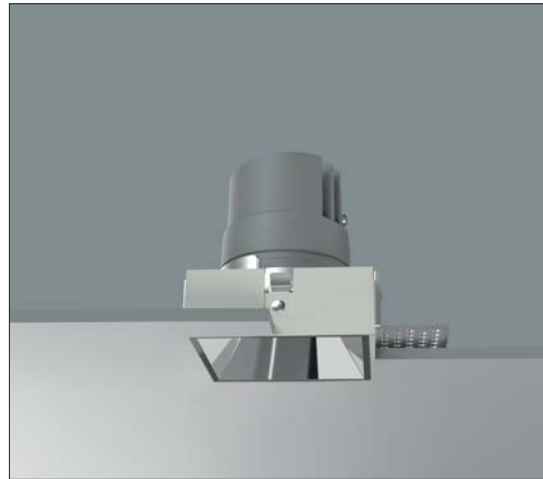
3X3B.G2■S.06 0...10V

3X3B.D2■S.06 dimm IGBT - TRIAC

Led color	Nominal lm	Beam spread
2 = 2700°K	829	24°
3 = 3000°K	872	



X4A 7,0x7,0 trimless (only for plasterboard)



UGR<19



	X4A	P
3X4A.210.□	GU10 led	—
3X4A.K■▲.□	led 9,5W	13,0
3X4A.x2■S.□	led 8,0W	8,9

IP40 CE

220V ÷ 240V

3X4A.210.□ GU10 led

IP40 Flicker < 20% CE

220V ÷ 240V

3X4A.K■▲.□ LED 9,5W CRI>90
dimming IGBT - TRIAC

Led color	Nominal lm	Beam spread
2 = 2700 °K	834	M = 36°
3 = 3000 °K	877	S = 24°

IP40 MC-E=3 CE

200m/A

3X4A.02■S.□ LED 8W CRI>95 Driver included

3X4A.E2■S.□ ON/OFF

3X4A.E2■S.□ DALI - Push

3X4A.G2■S.□ 0...10V

3X4A.D2■S.□ dimming IGBT - TRIAC

Led color	Nominal lm	Beam spread
2 = 2700 °K	829	24°
3 = 3000 °K	872	

Housing for plasterboard 7,4x7,4 cm

● 1X00.04A.01

Option: Honeycomb cover Ø 3,8 cm

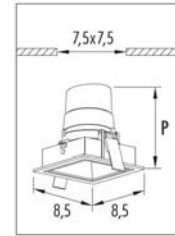
1XG3.H50.02

Option: Striped glass Ø 3,8 cm

1XG3.G50.ST



X4B 8,5x8,5 with trim (for plasterboard)



UGR<19

IP40

220V ÷ 240V

3X4B.210.□ GU10 led

IP40 Flicker < 20%

220V ÷ 240V

3X4B.K LED 9,5W dimm IGBT - TRIAC CRI>90

Led color	Nominal lm	Beam spread
2 = 2700°K	834	M = 36°
3 = 3000°K	877	S = 24°

IP40 MC-E=3

200m/A

3X4B.02 LED 8W CRI>95 Driver included ON/OFF

3X4B.E2 DALI - Push

3X4B.G2 0...10V

3X4B.D2 dimm IGBT - TRIAC

Led color	Nominal lm	Beam spread
2 = 2700°K	829	24°
3 = 3000°K	872	



□ 22 Black + Black □ 26 Black + White



□ 2H Black + Chrome □ 2B Black + Black Chrome □ 2G Black + Gold

	X4B	P
3X4B.210.□	GU10 led	—
3X4B.K □	led 9,5W	13,0
3X4B.x2 □	led 8,0W	8,9

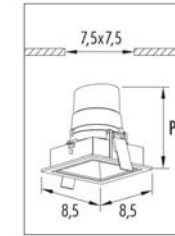
Option: Honeycomb cover Ø 3,8 cm

1XG3.H50.02

Option: Striped glass Ø 3,8 cm

1XG3.G50.ST

X4B 8,5x8,5 with trim (for plasterboard)



UGR<19

IP40

220V ÷ 240V

3X4B.210.□ GU10 led

IP40 Flicker < 20%

220V ÷ 240V

3X4B.K LED 9,5W dimm IGBT - TRIAC CRI>90

Led color	Nominal lm	Beam spread
2 = 2700°K	834	M = 36°
3 = 3000°K	877	S = 24°

IP40 MC-E=3

200m/A

3X4B.02 LED 8W CRI>95 Driver included ON/OFF

3X4B.E2 DALI - Push

3X4B.G2 0...10V

3X4B.D2 dimm IGBT - TRIAC

Led color	Nominal lm	Beam spread
2 = 2700°K	829	24°
3 = 3000°K	872	



□ 62 White + Black □ 66 White + White



□ 6H White + Chrome □ 6B White + Black Chrome □ 6G White + Gold

	X4B	P
3X4B.210.□	GU10 led	—
3X4B.K □	led 9,5W	13,0
3X4B.x2 □	led 8,0W	8,9

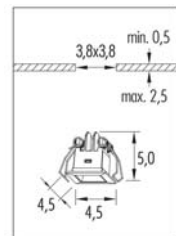
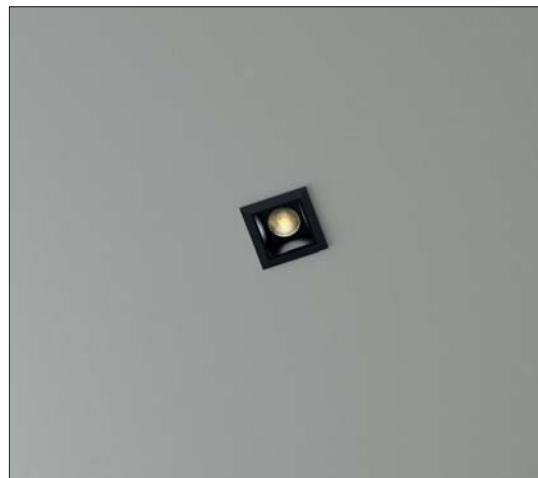
Option: Honeycomb cover Ø 3,8 cm

1XG3.H50.02

Option: Striped glass Ø 3,8 cm

1XG3.G50.ST

X5B 4,5x4,5 with trim (for plasterboard)



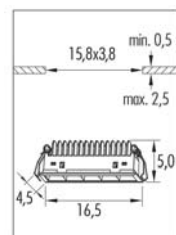
UGR<19

IP20	©	MC-E=3	CE	▽	Ⓢ
700m/A		LED 3W	CRI>95	Driver included	
3X5B.01	■▲▲.02	ON/OFF			
3X5B.F1	■▲▲.02	DALI Push 0/1...10V	On request		
■	Led color	Nominal lm	▲	Beam spread	
2	= 2700 °K	90	M	= 50°	
3	= 3000 °K	97	S	= 22°	

- Frame Optical lens
- 02 ● Black PMMA material

Available from 18/01/2021

X5B 16,5x4,5 with trim (for plasterboard)



UGR<19

IP20	©	MC-E=3	CE	▽	Ⓢ
700m/A		LED 5x2W	CRI>95	Driver included	
3X5B.02	■▲▲.02	ON/OFF			
3X5B.E2	■▲▲.02	DALI - Push			
3X5B.G2	■▲▲.02	0/1...10V			
■	Led color	Nominal lm	▲	Beam spread	
2	= 2700 °K	450	M	= 50°	
3	= 3000 °K	483	S	= 22°	

- Frame Optical lens
- 02 ● Black PMMA material

Available from 18/01/2021



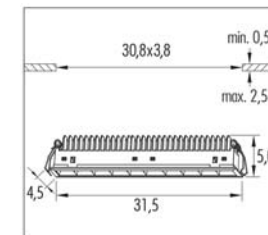
X5B 31,5x4,5 with trim (for plasterboard)



IP20	©	MC-E=3	CE	▽	⊕
700m/A		LED 10x2W	CRI>95	Driver included	
3X5B.03	■▲▲.02	ON/OFF			
3X5B.E3	■▲▲.02	DALI - Push			
3X5B.G3	■▲▲.02	0/1...10V			
■ Led color	Nominal lm	▲ Beam spread			
2 = 2700°K	900	M = 50°			
3 = 3000°K	965	S = 22°			

□	Frame	Optical lens
02	● Black	PMMA material

Available from 18/01/2021



UGR<19

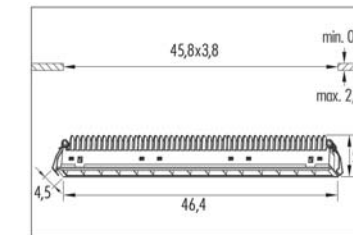
X5B 46,4x4,5 with trim (for plasterboard)



IP20	©	MC-E=3	CE	▽	⊕
700m/A		LED 15x2W	CRI>95	Driver included	
3X5B.04	■▲▲.02	ON/OFF			
3X5B.E4	■▲▲.02	DALI - Push			
3X5B.G4	■▲▲.02	0/1...10V			
■ Led color	Nominal lm	▲ Beam spread			
2 = 2700°K	1350	M = 50°			
3 = 3000°K	1448	S = 22°			

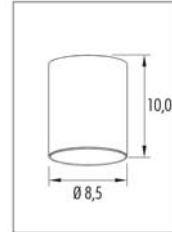
□	Frame	Optical lens
02	● Black	PMMA material

Available from 18/01/2021



UGR<19

X7R $\varnothing 8,5$



UGR<19

IP20	MC-E=3	
220V ÷ 240V	LED 8W	CRI>95
3XR.H23S. <input type="checkbox"/>	dimming IGBT - TRIAC	
LED color	Nominal lm	Beam spread
3000°K	877	24°



22 Black + Black



26 Black + White



2H Black + Chrome



2B Black + Black Chrome



2G Black + Gold



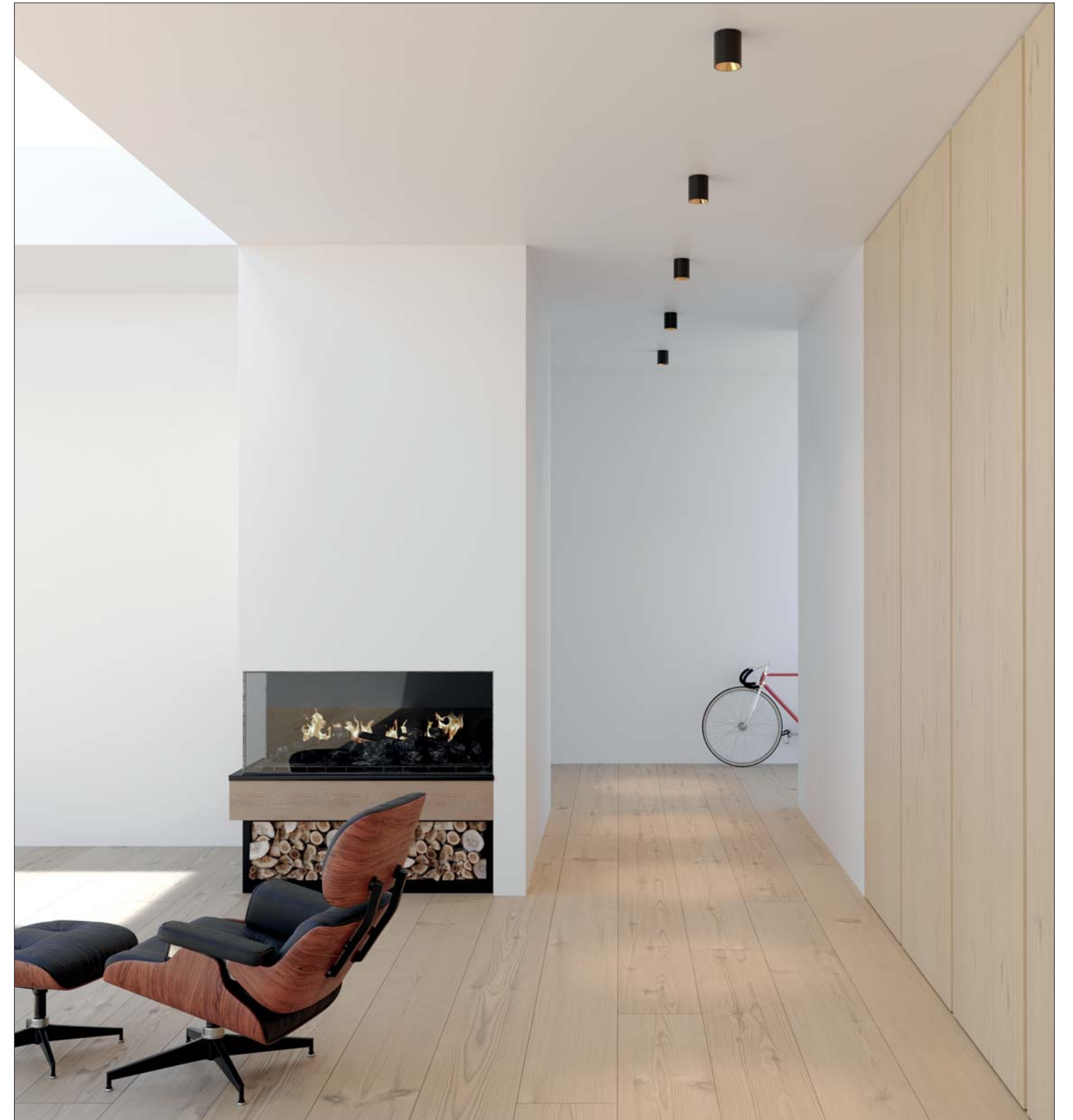
Option: Honeycomb cover $\varnothing 3,8$ cm

1XG3.H50.02

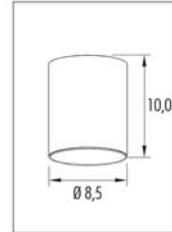


Option: Striped glass $\varnothing 3,8$ cm

1XG3.G50.ST



X7R $\varnothing 8,5$



UGR<19

IP20	MC-E=3	CE
220V ÷ 240V	LED 8W	CRI>95
3X7R.H23S. <input type="checkbox"/>	dimming IGBT - TRIAC	
LED color	Nominal lm	Beam spread
3000 °K	877	24°



62 White + Black



66 White + White



6H White + Chrome



6B White + Black Chrome



6G White + Gold



Option: Honeycomb cover $\varnothing 3,8$ cm

1XG3.H50.02



Option: Striped glass $\varnothing 3,8$ cm

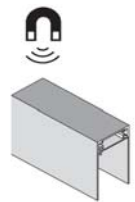
1XG3.G50.ST



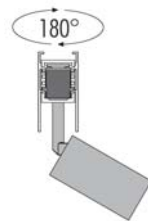
X-Rail

X-Rail is a magnet track system with low voltage of 48V, available in the following versions: recessed trimless (only for plasterboard), surface or pendant. The 4 track conductors can be used for an on/off power supply circuit, or for a dimmable "Noise Free" circuit, as described in the wiring schemes. X-Gun, X-Dark, X-Line and X-Pendant products are suitable for different needs of lighting. They are fixed into the X-Rail profile by the magnet and the click safety lock.

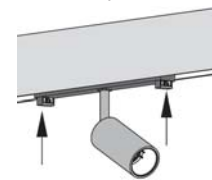
Magnet system



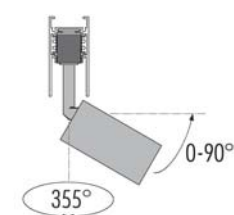
Bidirectional installation



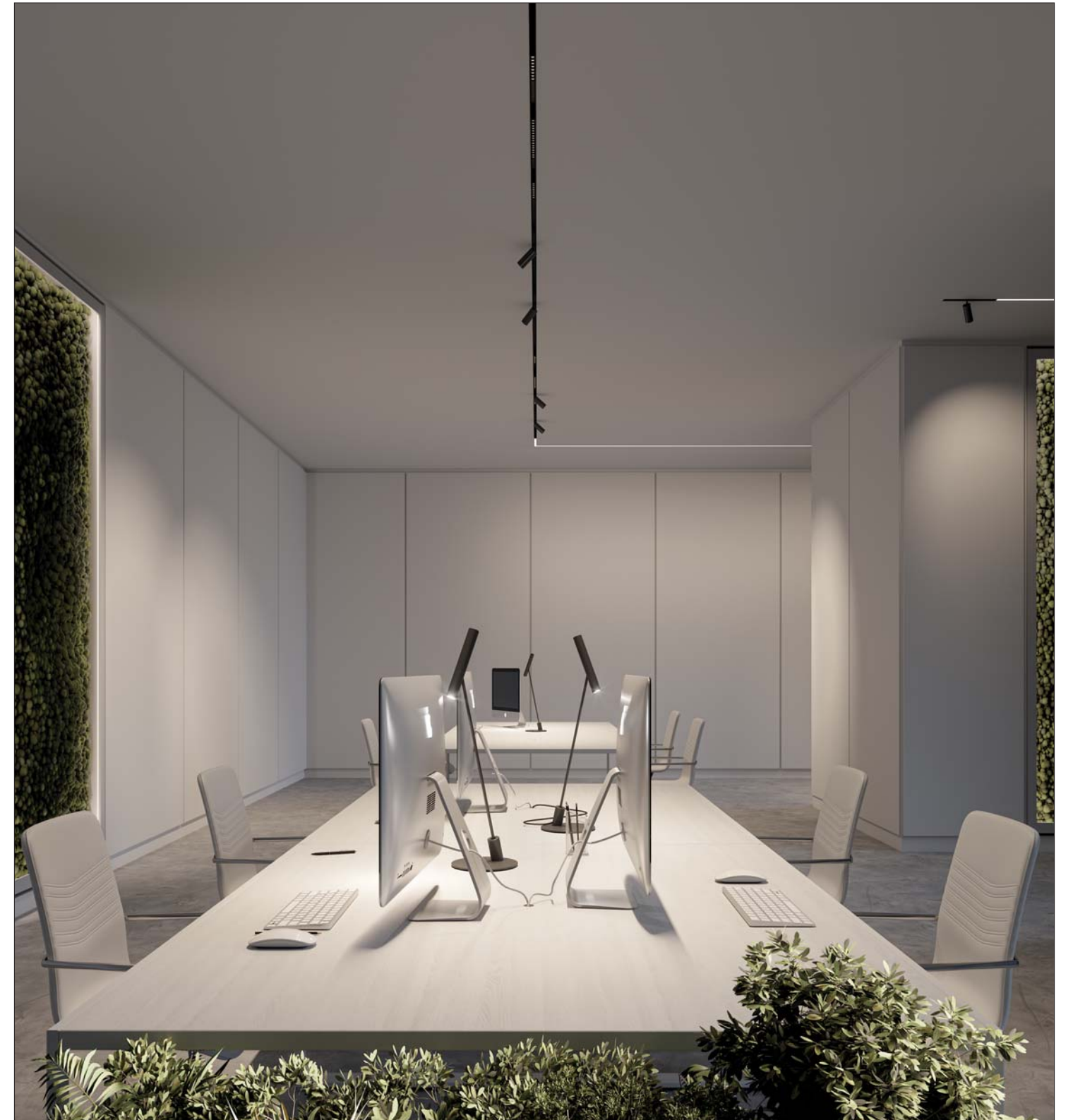
Click&Safety Lock

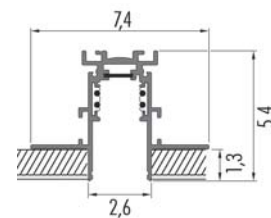


Adjustable

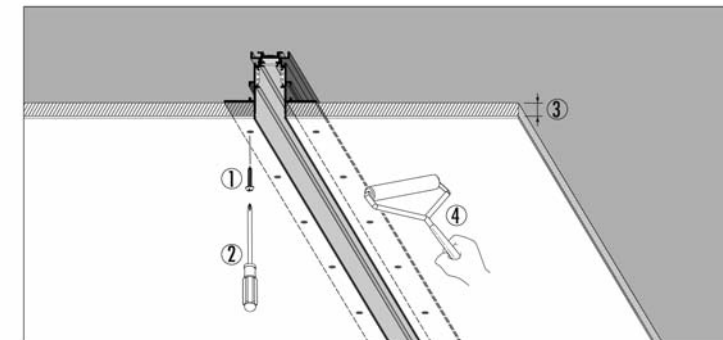


WIFI Technology by App

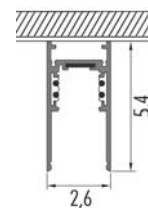




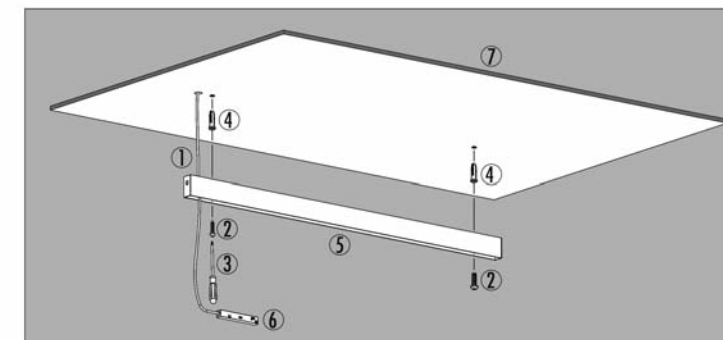
Recessed trimless (only for plasterboard)



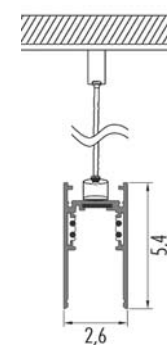
- 1 Screw
- 2 Screw Driver
- 3 Gypsum Board 13,3mm
- 4 Plastering



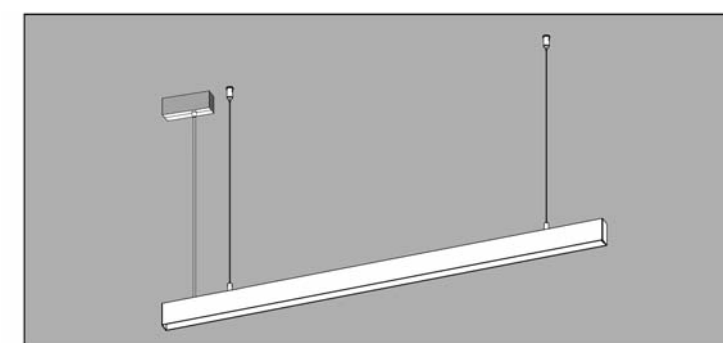
Surface



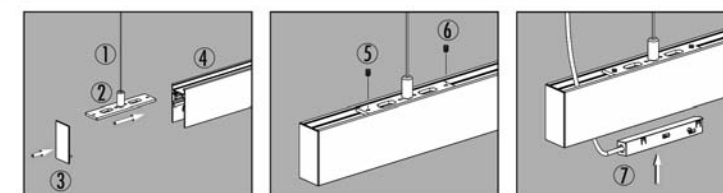
- 1 DC 48V Input
- 2 Screw
- 3 Screw Driver
- 4 Expansion Screw
- 5 Track
- 6 DC Connecting Box
- 7 Ceiling



Pendant



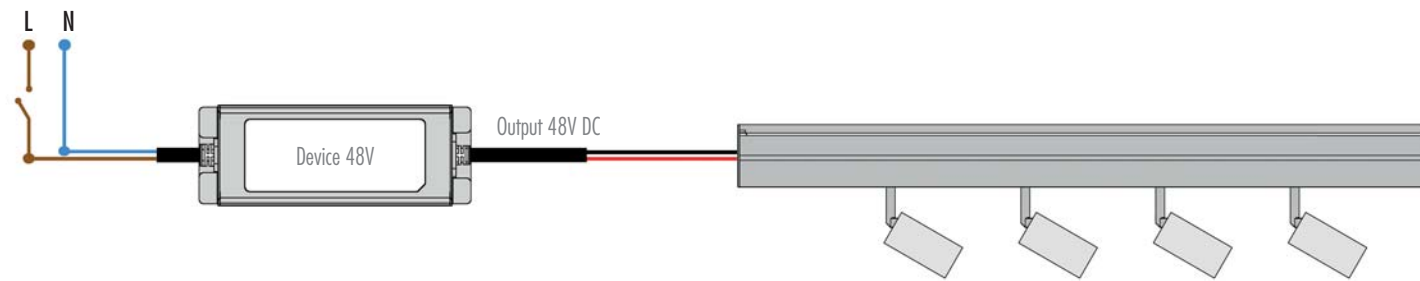
- 1 Steel cable
- 2 Mounting Plate
- 3 End cup for track
- 4 Track
- 5 Screw
- 6 Screw
- 7 DC Connecting Box



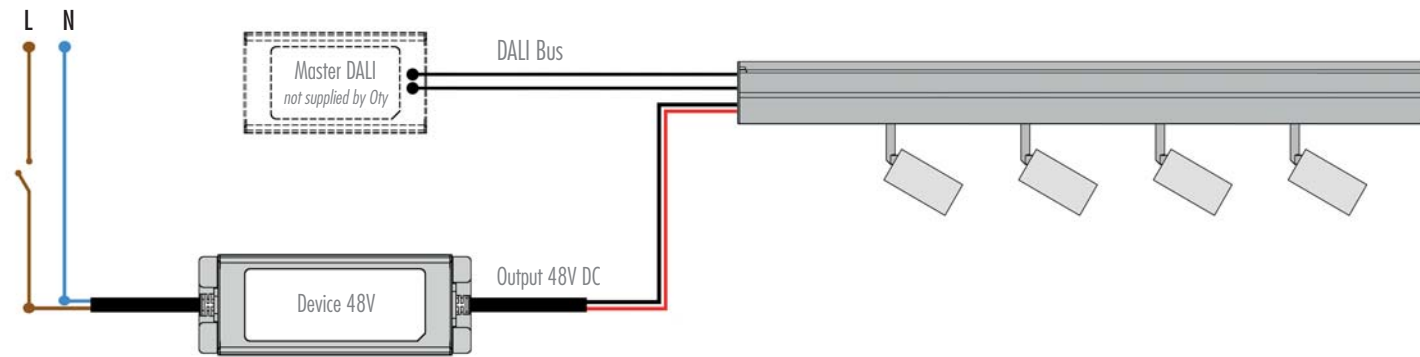
◀ Surface track installed on an exposed concrete ceiling by using an appropriate predisposition

Devices Installation Scheme

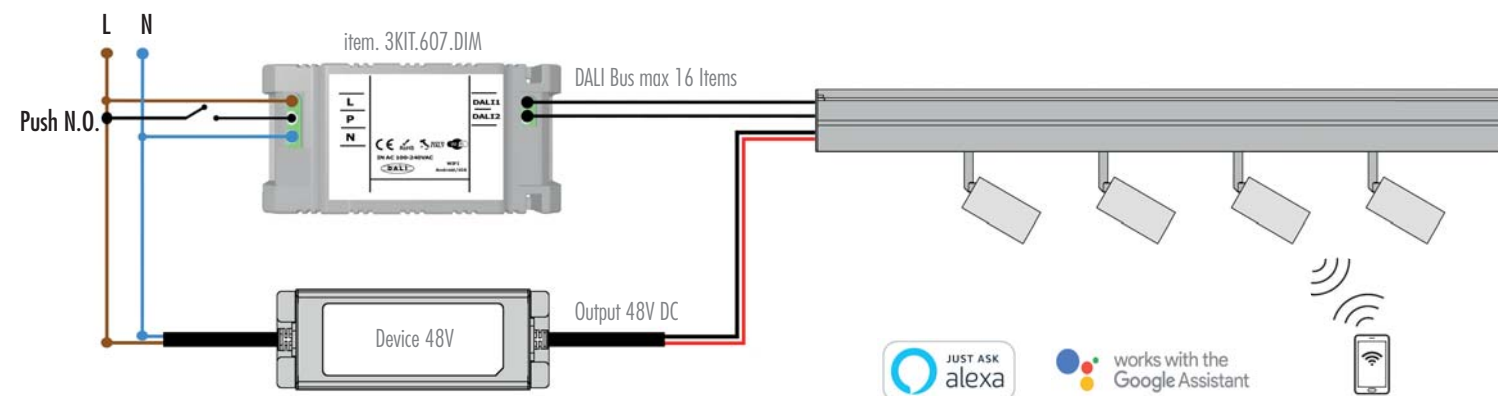
Option 1:
on/off solution



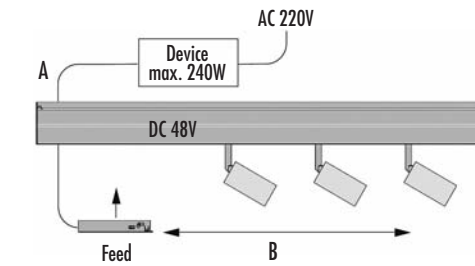
Option 2:
dimmable "Noise Free" DALI: standard addressable solution



Option 3:
dimmable "Noise Free" WiFi: auto addressable solution



Drop voltage table



Device	(A)	5 mt.	10 mt.	20 mt.	30 mt.
75W	(B)	50 mt.	50 mt.	40 mt.	30 mt.
100W	(B)	50 mt.	50 mt.	30 mt.	10 mt.
150W	(B)	20 mt.	15 mt.	5 mt.	—
240W	(B)	15 mt.	10 mt.	—	—

(A) Distance Device/Feed Unit
(B) Distance Feed Unit/Spot

Technical characteristics of the devices for 48V Track

Code	W	Size (mm)	CV	Connectable fixtures	Max distance	Cable section	Tech. Info
3KIT.048.075	75	180x63x36	48V	Max: 60W	See chart here above	2.5mm ²	100-305V 47-63Hz
3KIT.048.100	100	199x63x36	48V	Max: 70W	See chart here above	2.5mm ²	100-305V 47-63Hz
3KIT.048.150	150	219x63x36	48V	Max: 105W	See chart here above	2.5mm ²	100-305V 47-63Hz
3KIT.048.245	240	244x71x38	48V	Max: 150W	See chart here above	2.5mm ²	100-305V 47-63Hz

Led warranty ONLY when used together with devices bought from Oty srl

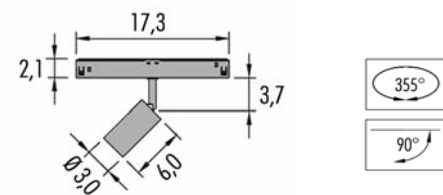
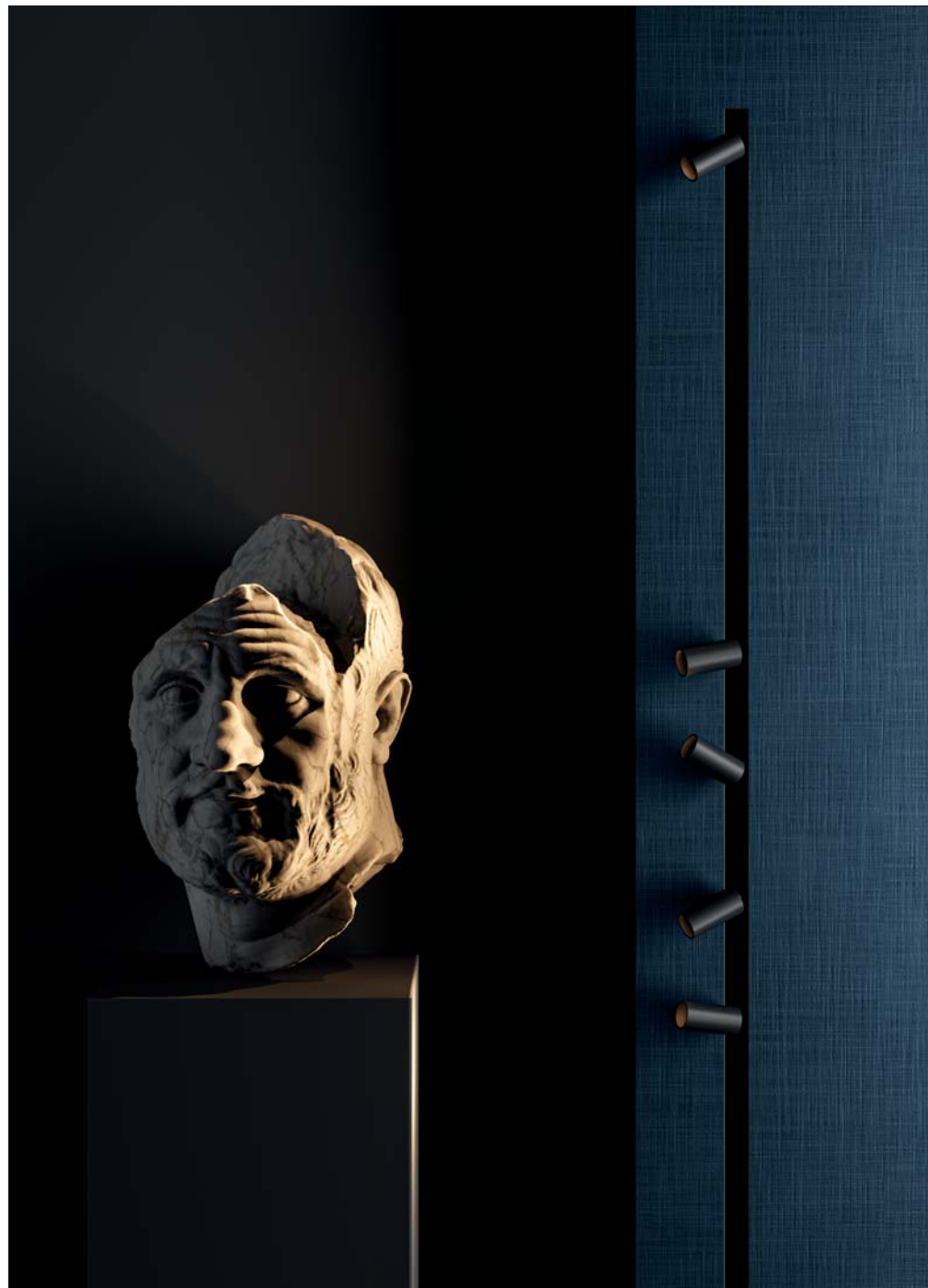
◀ WiFi device "Noise Free" to dim the light

Code	Size (mm)
3KIT.607.DIM	80x40x25mm

It works by WiFi with smart phone, Google Assistant or Amazon Alexa.
App on request.

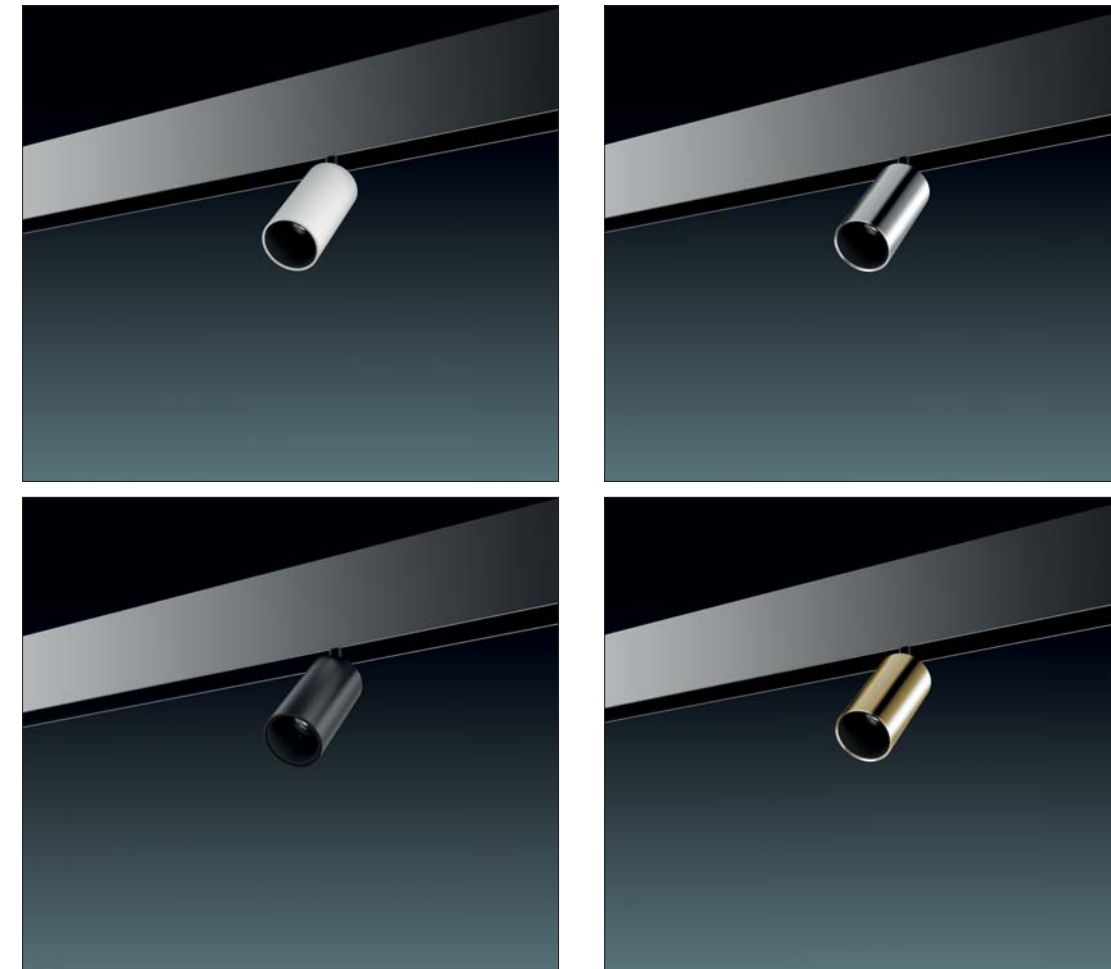


X-Gun 1 ø 3,0



IP20	MC-E=3	CE
48V	LED 3W	CRI>95
3XG1.02	on/off	
3XG1.G2	dimmable	
■ Led color	Nominal lm	▲ Beam spread
2 = 2700°K	427	S = 24°
3 = 3000°K	430	T = 10°

- Attention, before ordering the item:
- 1- Choose the appropriate 48V devices (75-100-150-240W), paying attention to the drop voltage table;
 - 2- If you need to dim the light, choose the two options:
 - a. by a Master DALI (item not supplied by Oty);
 - b. by our dimming device 3KIT.607.DIM.
 - 3- All our items are "Noise Free" dimming if installed as explained on the "devices installation scheme".



- | | |
|----|--------|
| □ | Frame |
| 02 | Black |
| 06 | White |
| CH | Chrome |
| GD | Gold |



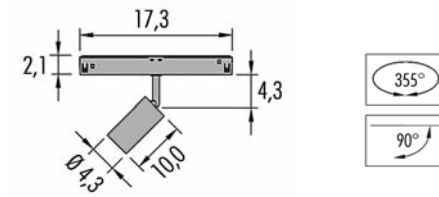
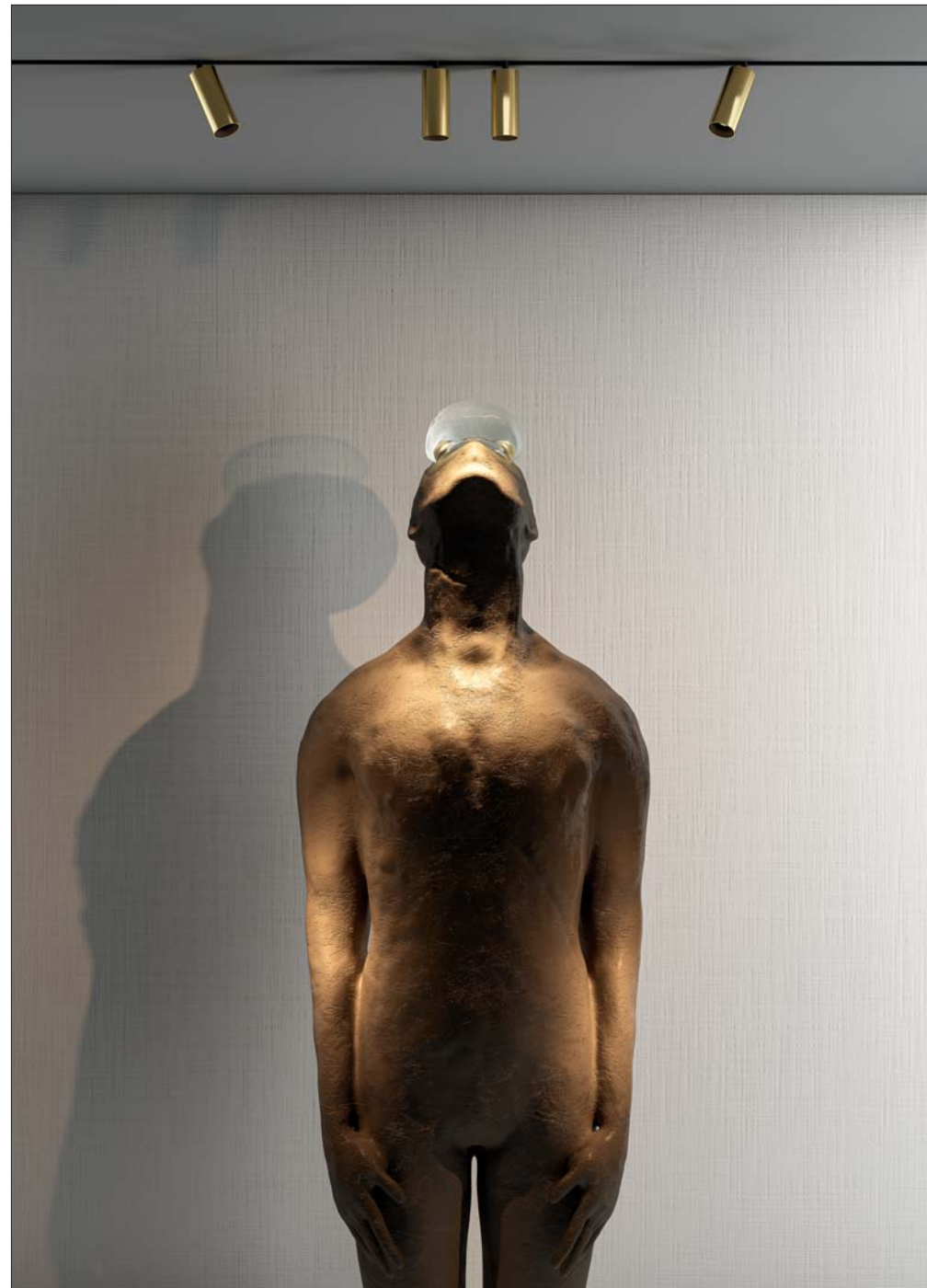
Standard: X-Gun is supplied with Anti-glare Ring



Option: Cross Anti-glare Ring

1XG1.C30.02

X - Gun 2 $\varnothing 4,3$



IP20	MC-E=3	CE
48V	LED 8W	CRI>95
3XG2.03	on/off	
3XG2.G3	dimmable	
Led color	Nominal lm	Beam spread
2 = 2700°K	829	S = 24°
3 = 3000°K	872	T = 8°

- Attention, before ordering the item:
- 1- Choose the appropriate 48V devices (75-100-150-240W), paying attention to the drop voltage table;
 - 2- If you need to dim the light, choose the two options:
 - a. by a Master DALI (item not supplied by Oty);
 - b. by our dimming device 3KIT.607.DIM.
 - 3- All our items are "Noise Free" dimming if installed as explained on the "devices installation scheme".



- Frame
- 02 ● Black
- 06 ○ White
- CH ● Chrome
- GD ● Gold



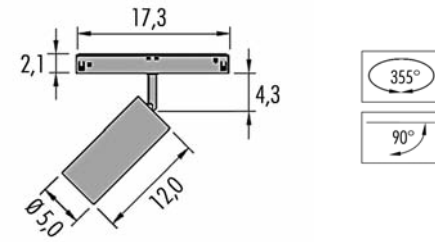
Standard: X - Gun is supplied with Anti-glare Ring



Option: Cross Anti-glare Ring

1XG2.C43.02

X - Gun 3 Ø 5,0



IP20	MC-E=3	CE
48V	LED 13W	CRI>95
3XG3.03	on/off	
3XG3.G3	dimmable	
Led color	Nominal lm	Beam spread
2 = 2700°K	1300	M = 36°
3 = 3000°K	1425	S = 24°

Attention, before ordering the item:

- 1- Choose the appropriate 48V devices (75-100-150-240W), paying attention to the drop voltage table;
- 2- If you need to dim the light, choose the two options:
 - a. by a Master DALI (item not supplied by Oty);
 - b. by our dimming device 3KIT.607.DIM.
- 3- All our items are "Noise Free" dimming if installed as explained on the "devices installation scheme".



Standard: X - Gun is supplied with Anti-glare Ring



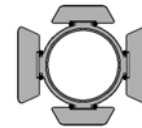
Option: Honeycomb cover Ø 3,8 cm

1XG3.H50.02



Option: Striped glass Ø 3,8 cm

1XG3.G50.ST



Option: Barn Door Ø 5,0 cm

1XG3.D50.02

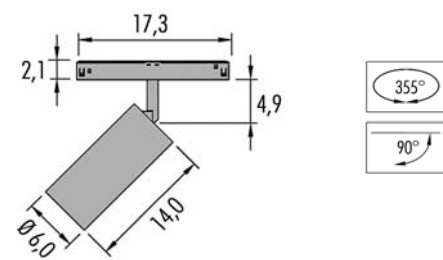
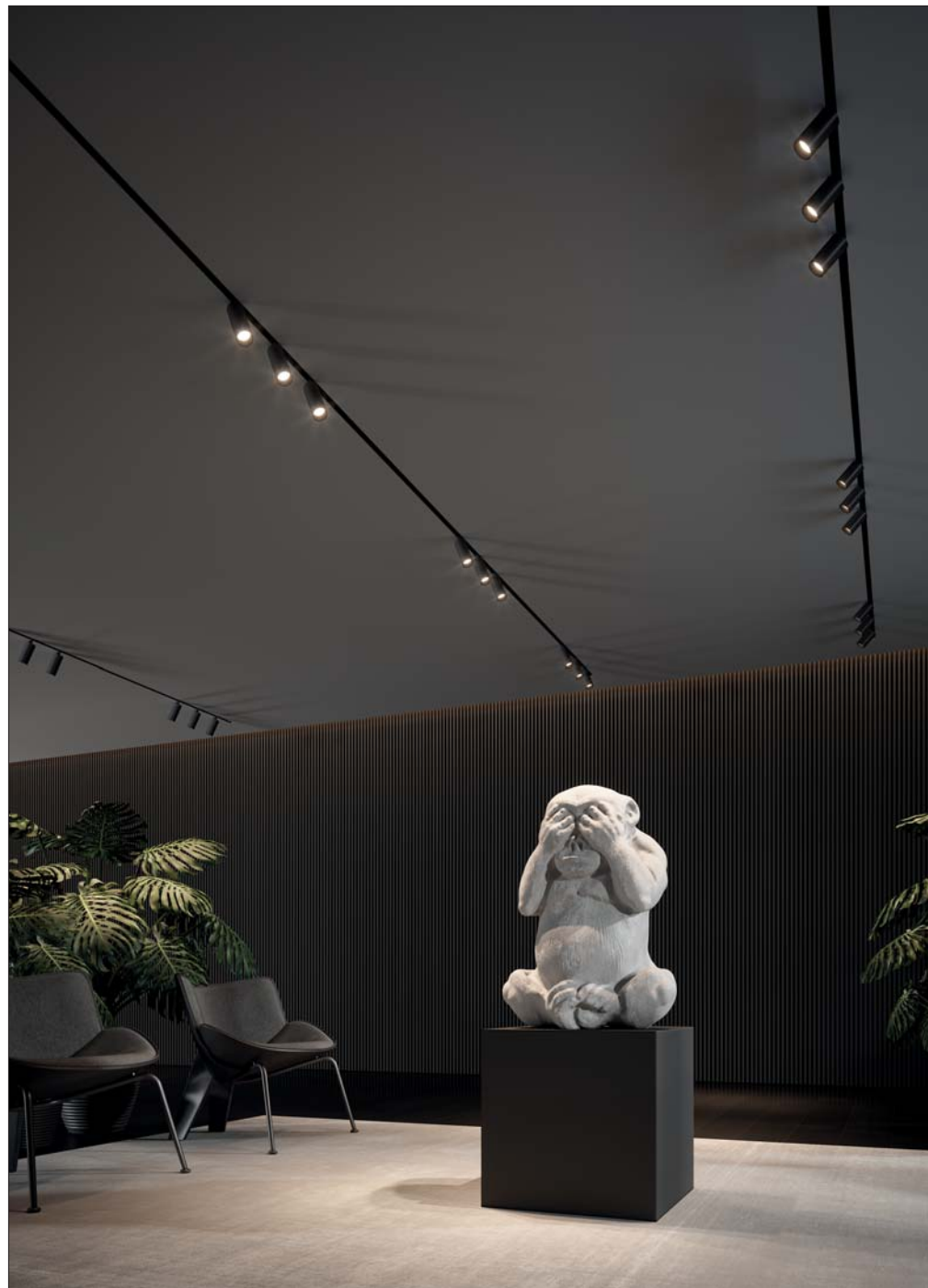


□ Frame

02 ● Black

06 ○ White

X - Gun 4 Ø 6,0



IP20	MC-E=3	CE
48V	LED 23W	CRI>95
3XG4.05	on/off	
3XG4.G5	dimmable	
Led color	Nominal lm	Beam spread
2 = 2700°K	2131	S = 24°
3 = 3000°K	2241	T = 15°

- Attention, before ordering the item:
- 1- Choose the appropriate 48V devices (75-100-150-240W), paying attention to the drop voltage table;
 - 2- If you need to dim the light, choose the two options:
 - a. by a Master DALI (item not supplied by Oty);
 - b. by our dimming device 3KIT.607.DIM.
 - 3- All our items are "Noise Free" dimming if installed as explained on the "devices installation scheme".



Standard: X - Gun is supplied with Anti-glare Ring



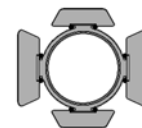
Option: Honeycomb cover Ø 5,2 cm

1XG4.H60.02



Option: Striped glass Ø 5,2 cm

1XG4.G60.ST



Option: Barn Door Ø 6,0 cm

1XG4.D60.02



□ Frame

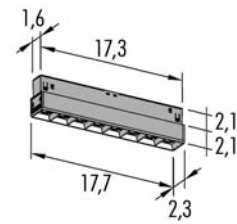
02 ● Black

06 ○ White



X - Dark 1

X-Dark can be used as a single element,
or for unlimited length compositions.
Material: PMMA optical lens.
Light distribution: symmetric.



UGR<19



IP20	MC-E=3	CE
48V	LED 8W	CRI>95
3XD1.02	on/off	
3XD1.G2	dimmable	
Led color	Nominal lm	Beam spread
2 = 2700 °K	720	M = 50°
3 = 3000 °K	772	T = 15°

Attention, before ordering the item:

- 1- Choose the appropriate 48V devices (75-100-150-240W), paying attention to the drop voltage table;
- 2- If you need to dim the light, choose the two options:
 - a. by a Master DALI (item not supplied by Oty);
 - b. by our dimming device 3KIT.607.DIM.
- 3- All our items are "Noise Free" dimming if installed as explained on the "devices installation scheme".

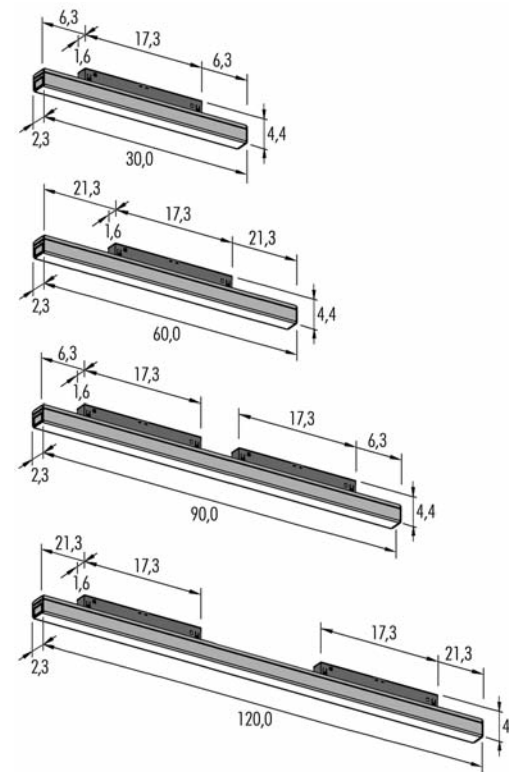
Frame

02 ● Black

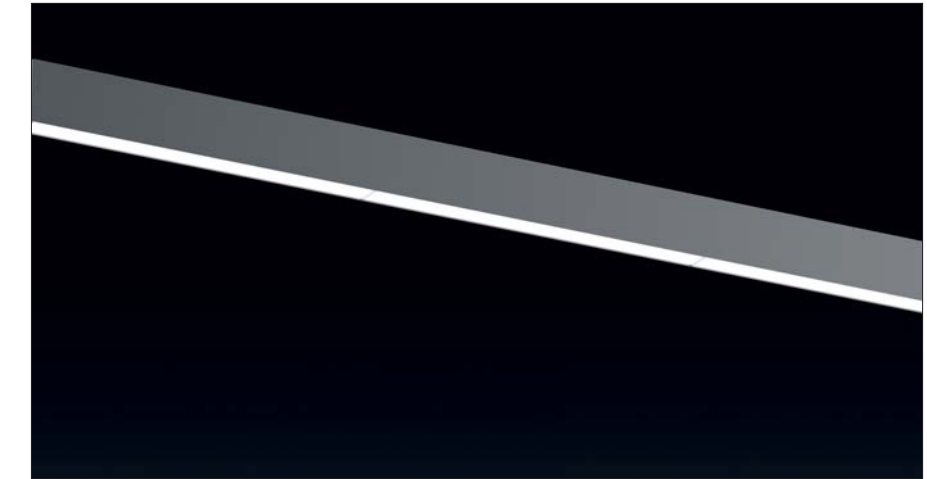
X-Line 30 | 60 | 90 | 120



X-Line can be used as a single element, or for unlimited length compositions without any dark zone.
Material: PC optical cover.
Light distribution: symmetric.



X-Line 60 and X-Line 120 cm, are the only measures that can be used to correctly illuminate the corners.



X-Line 30cm

IP20	MC-E=3	CE	▽	⊕
48V	LED 5W	CRI>90		
3XL1.04 L.D1	on/off			
3XL1.G4 L.D1	dimmable			
■ Led color	Nominal lm	▲ Beam spread		
2 = 2700 °K	460	120°		
3 = 3000 °K	500			

X-Line 60cm

IP20	MC-E=3	CE	▽	⊕
48V	LED 10W	CRI>90		
3XL2.04 L.D1	on/off			
3XL2.G4 L.D1	dimmable			
■ Led color	Nominal lm	▲ Beam spread		
2 = 2700 °K	920	120°		
3 = 3000 °K	1000			

X-Line 90cm

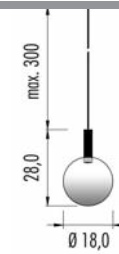
IP20	MC-E=3	CE	▽	⊕
48V	LED 15W	CRI>90		
3XL3.04 L.D1	on/off			
3XL3.G4 L.D1	dimmable			
■ Led color	Nominal lm	▲ Beam spread		
2 = 2700 °K	1380	120°		
3 = 3000 °K	1500			

X-Line 120cm

IP20	MC-E=3	CE	▽	⊕
48V	LED 20W	CRI>90		
3XL4.04 L.D1	on/off			
3XL4.G4 L.D1	dimmable			
■ Led color	Nominal lm	▲ Beam spread		
2 = 2700 °K	1840	120°		
3 = 3000 °K	2000			

Attention, before ordering the item:

- 1- Choose the appropriate 48V devices (75-100-150-240W), paying attention to the drop voltage table;
- 2- If you need to dim the light, choose the two options:
 - a. by a Master DALI (item not supplied by Oty);
 - b. by our dimming device 3KIT.607.DIM.
- 3- All our items are "Noise Free" dimming if installed as explained on the "devices installation scheme".

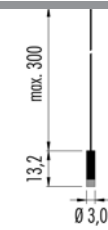


IP40	©	Bijou	CE	▽	⊕
48V	6W	CRI>90			
3BUX.02	■ S. □	on/off			
3BUX.G2	■ S. □	dimmable			
■ Led color	Nominal lm	Beam spread			
2 = 2700 °K	528	25°			
3 = 3000 °K	552				

□ Cylinder

- 02 ● Black
- 06 ○ White
- C1 ● Copper Anodized
- S1 ● Brass Anodized

Black coaxial power supply cable.

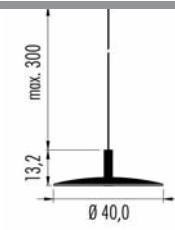


IP20	©	C'est Toi	CE	▽	⊕
48V	6W	CRI>90			
3CTX.02	■ S. □	on/off			
3CTX.G2	■ S. □	dimmable			
■ Led color	Nominal lm	Beam spread			
2 = 2700 °K	528	20°			
3 = 3000 °K	552				

□ Diffuser color

- 02 ● Black
- 06 ○ White
- C1 ● Copper Anodized
- S1 ● Brass Anodized

Black coaxial power supply cable.

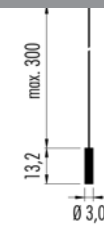


IP20	©	Chapeau	CE	▽	⊕
48V	6W	CRI>90			
3CHX.02	■ S. □	on/off			
3CHX.G2	■ S. □	dimmable			
■ Led color	Nominal lm	Beam spread			
2 = 2700 °K	528	20°			
3 = 3000 °K	552				

□ Up Down

- 02 ●● Black/Black
- 06 ○○ White/White
- C1K ●● Copper Anodized/Black
- C1W ●○ Copper Anodized/White
- S1K ●● Brass Anodized/Black
- S1W ●○ Brass Anodized/White

Black coaxial power supply cable.

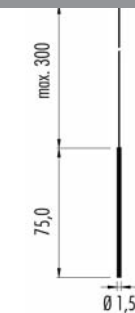


IP20	©	C'est Moi	CE	▽	⊕
48V	6W	CRI>90			
3CMX.02	■ S. □	on/off			
3CMX.G2	■ S. □	dimmable			
■ Led color	Nominal lm	Beam spread			
2 = 2700 °K	528	20°			
3 = 3000 °K	552				

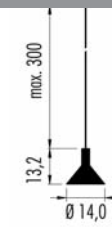
□ Diffuser color

- 02 ● Black
- 06 ○ White
- B ● Blue
- C ● Copper
- G ● Green
- P ● Rose
- R ● Red

Black coaxial power supply cable.



IP20	©	Petit	CE	▽	⊕
48V	2,3W	CRI>90			
3PTX.02	■ L. □	on/off			
3PTX.G2	■ L. □	dimmable			
■ Led color	Nominal lm	Beam spread			
2 = 2700 °K	237	60°			
3 = 3000 °K	256				



IP20	©	Chérie	CE	▽	⊕
48V	6W	CRI>90			
3CEX.02	■ S. □	on/off			
3CEX.G2	■ S. □	dimmable			
■ Led color	Nominal lm	Beam spread			
2 = 2700 °K	528	20°			
3 = 3000 °K	552				

Recessed trimless



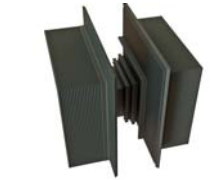
1XR5.100.02 100cm
1XR5.200.02 200cm
1XR5.300.02 300cm

Black color



1XR5.GAI.02 Vertical Internal connector

Non electrified item - Black color



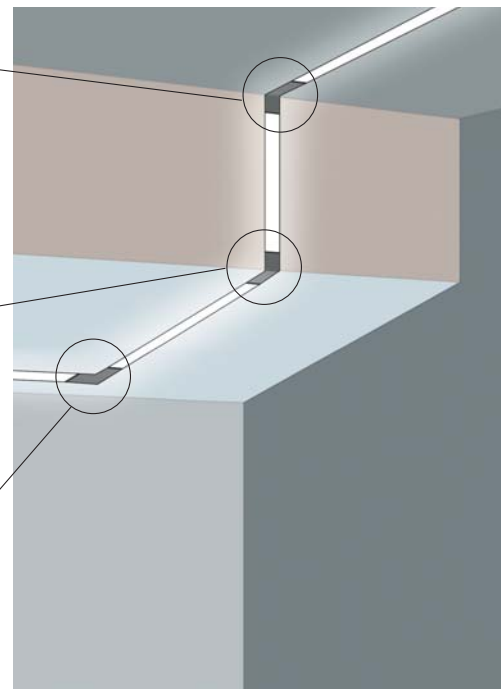
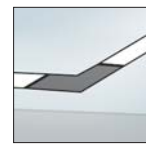
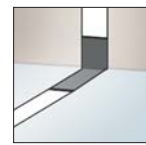
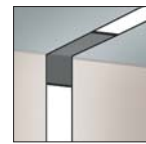
1XR5.GAE.02 Vertical External connector

Non electrified item - Black color



1XR5.GAH.02 Horizontal connector

Non electrified item - Black color



1XR5.GF1.02 Brackets for track fixing

3 Units to connect each linear track, or 6 units to connect two linear tracks to a singular angular (horizontal or vertical) connector



1XR5.PT1.02 100cm

Plaster installation guard. Black color

Surface | Pendant



1XR2.100.02 100cm
1XR2.200.02 200cm
1XR2.300.02 300cm

Black color



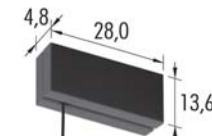
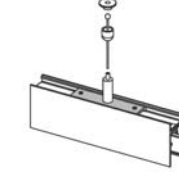
1XR2.GAH.02 Cover for L joint

Black color



1XR2.GL1.01 150cm
1XR2.GL2.01 300cm
1XR2.GL3.01 500cm

Long bracket with steel cable Ø 1,5 mm



3XR2.C01.02 Wiring cable 150cm
3XR2.C02.02 Wiring cable 300cm
3XR2.C03.02 Wiring cable 500cm

48V device - 75W - On/Off - Black canopy



3XR2.C13.02 Wiring cable 300cm

Black canopy with no device on board.
Place the device in remote position.

Accessories for Recessed, Surface and Pendant 48V track system



1XR.TC1.02 End cup for track

Polycarbonate body in black color



1XR.TE1.02 Short end - Feed

Black color



1XR.TF1.02 End cup with cable hole

Polycarbonate body in black color



1XR.GEC.02 Joining connector

Electrified item - Black color



1XR.CE3.02 300cm

Aesthetic track cover in black color



1XR.GEA.02 Adjustable Corner

Electrified item - Black color



1XR.CUT Cutting tool for track conductors



1XR.GMC.02 Mechanical jointing connect

Non electrified item - black color

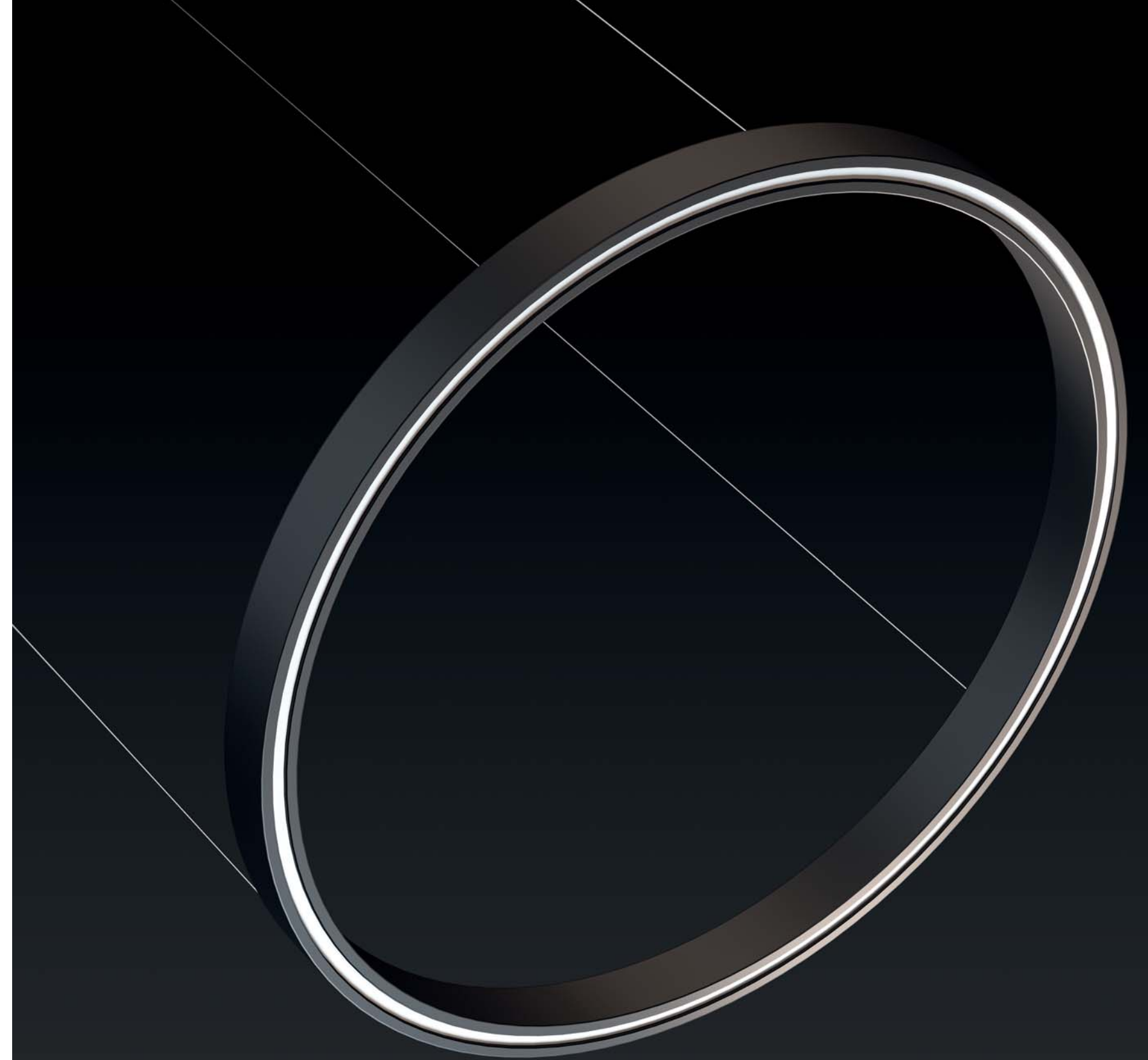
X-Running

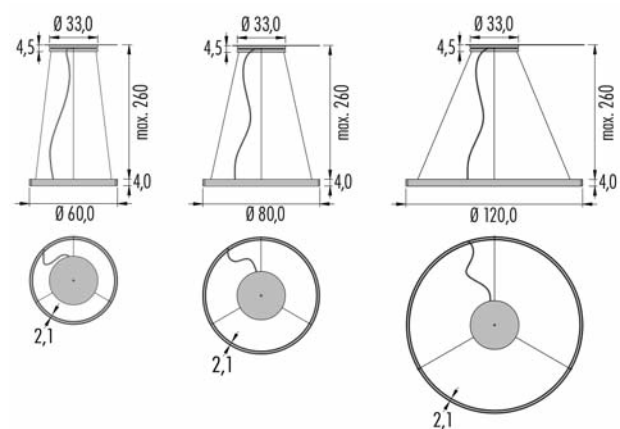
Pendant light made of aluminum structure with upward and downward light emission.

Available in two versions:

- in sizes Ø60, Ø80 and Ø120cm, dimmable with central canopy Ø33cm.

- in sizes Ø60, Ø80, Ø120, Ø180 and Ø230cm, on/off or dimmable with canopy Ø7,5cm and transformer to be placed in a remote position.





R06 Ø 60,0

IP40 ⓘ UGR<14 CE ▽ Ⓢ
24V 88W CRI>90

3RC06.4 ■ L. □ DALI - Push - 1...10V

Led color	Nominal lm	Beam spread
2 = 2700 °K	6552	44°
3 = 3000 °K	7280	

□ Struttura

02 ● Nero
06 ○ Bianco

R08 Ø 80,0

IP40 ⓘ UGR<14 CE ▽ Ⓢ
24V 126W CRI>90

3RC08.4 ■ L. □ DALI - Push - 1...10V

Led color	Nominal lm	Beam spread
2 = 2700 °K	9432	44°
3 = 3000 °K	10480	

R12 Ø 120,0

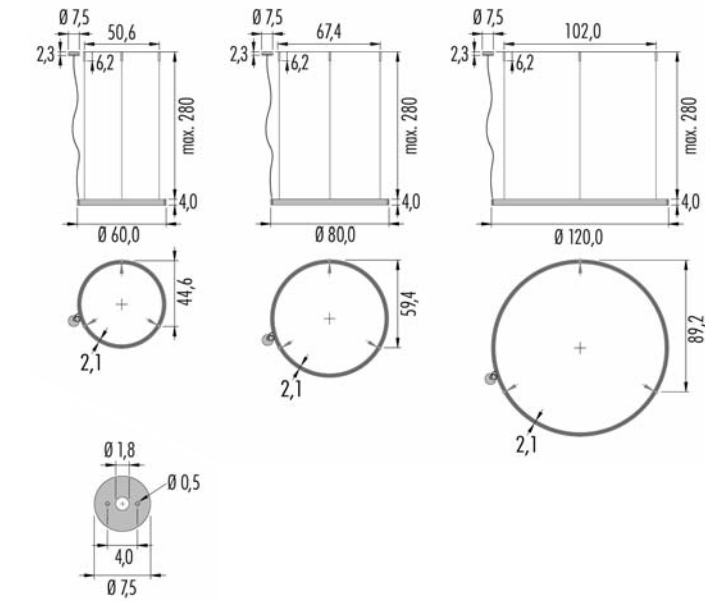
IP40 ⓘ UGR<14 CE ▽ Ⓢ
24V 184W CRI>90

3RC12.4 ■ L. □ DALI - Push - 1...10V

Led color	Nominal lm	Beam spread
2 = 2700 °K	13752	44°
3 = 3000 °K	15280	



X-Running



R06 Ø 60,0 *Electronic Gear in remote position*

IP40	UGR<14	CE	▽	⊕
24V	88W	CRI>90		
3R06.4	L	on/off		
Led color	<i>Nominal lm</i>	<i>Beam spread</i>		
2 = 2700 °K	6552	44°		
3 = 3000 °K	7280			

3KIT.E24.DIM *Dimmable option:*
DALI - Push - 1...10V

R08 Ø 80,0 *Electronic Gear in remote position*

IP40	UGR<14	CE	▽	⊕
24V	126W	CRI>90		
3R08.4	L	on/off		
Led color	<i>Nominal lm</i>	<i>Beam spread</i>		
2 = 2700 °K	9432	44°		
3 = 3000 °K	10480			

3KIT.E24.DIM *Dimmable option:*
DALI - Push - 1...10V

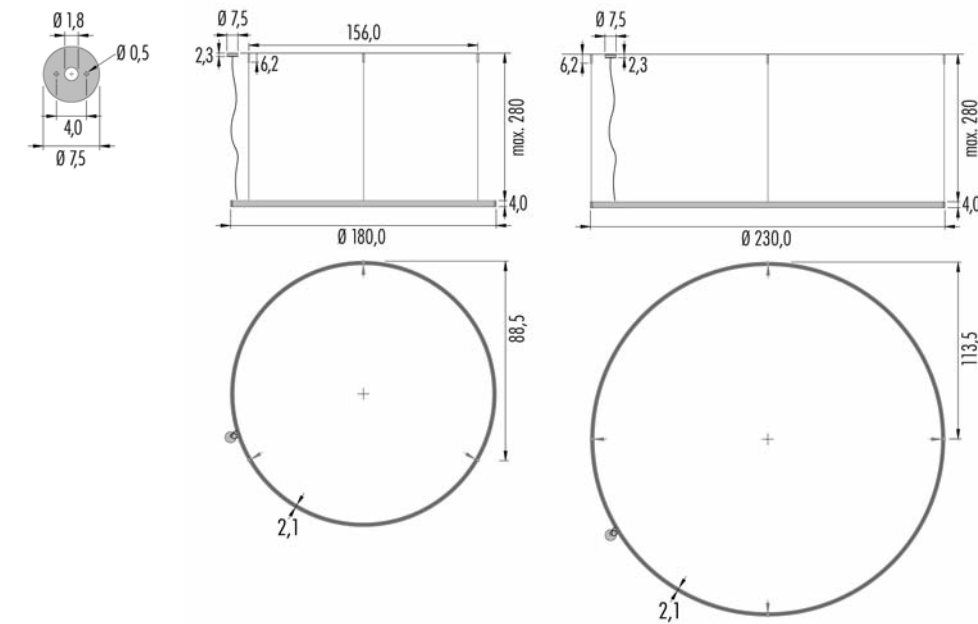
R12 Ø 120,0 *Electronic Gear in remote position*

IP40	UGR<14	CE	▽	⊕
24V	184W	CRI>90		
3R12.4	L	on/off		
Led color	<i>Nominal lm</i>	<i>Beam spread</i>		
2 = 2700 °K	13752	44°		
3 = 3000 °K	15280			

3KIT.E24.DIM *Dimmable option:*
DALI - Push - 1...10V

□ *Frame*

02 ● Black
06 ○ White



- Frame
- 02 ● Black
- 06 ○ White

R18 Ø 180,0 *Electronic Gear in remote position*

IP40	UGR<14	CE	▽	⊕
24V	270W	CRI>90		
3R18.4	■ L. □	on/off - 1...10V		
■ <i>Led color</i>	<i>Nominal lm</i>	<i>Beam spread</i>		
2 = 2700 °K	20232	44°		
3 = 3000 °K	22480			

3KIT.D24.DIM *Dimmable option:*
DALI - Push - 1...10V

R23 Ø 230,0 *Electronic Gear in remote position*

IP40	UGR<14	CE	▽	⊕
24V	347W	CRI>90		
3R23.4	■ L. □	on/off - 1...10V		
■ <i>Led color</i>	<i>Nominal lm</i>	<i>Beam spread</i>		
2 = 2700 °K	26028	44°		
3 = 3000 °K	28920			


3KIT.D24.DIM *Dimmable option:*
DALI - Push - 1...10V


Vademecum

MC-E It is a parameter which defines the deterioration degree of the colour of the light coming from a led source during its life.
MacAdams step: Step 3 is nowadays the lower deterioration level.


CRI Colour Rendering Index of a light source and measure indicating how natural the colours of objects appear when enlightened from it.

lm Lumen is the unit of the light flux of a light source.

 Class I: only basic insulation, accessible conductors are earthed. Earthing compulsory.

 Class II: basic insulation plus second insulation or both are replaced by reinforced insulation. Earthing excluded

 Class III: low tension inferior to 50V-50Hz. No ground cable.

 Device which can be mounted on flammable surfaces (EN 60 598/VDE 0711).

CE Products complying with the Eur. Comm. rules.

 Transformer included

 Transformer not included

UGR Unified Glare Rating

IP identification

IP0X No protection

IP1X Protection against solid objects $\geq 50\text{mm}$

IP2X Protection against solid objects $\geq 12\text{mm}$

IP3X Protection against solid objects $\geq 2,5\text{mm}$

IP4X Protection against solid objects $\geq 1\text{mm}$

IP5X Dust-protected

IP6X Dust-proof



CREDITS

Graphic Concept	Claudio Malvestio
Images.....	Mattia Coscione/Franco dell'Anna
Printing	Grafiche Gemma
Copyright	OTY s.r.l.
Printed in Italy	November - 2020

OTY RESERVES THE RIGHT TO INTRODUCE ANY CHANGES TO ITS OWN MODELS, WITHOUT NOTICE IN ADVANCE. ALL MODELS HAVE BEEN DULY REGISTERED.

OTY SI RISERVA IL DIRITTO DI APPORTARE AL PROPRI MODELLI, SENZ'ALCUN PREAVVISO, QUALSIASI MODIFICA RITENESSE OPPORTUNA. TUTTI I MODELLI SONO DEPOSITATI.

OTY BEHALT SICH DAS RECHT VOR ÄNDERUNGEN VORZUNEHMEN, OHNE SOFORTIGE BENCHRICHTIGUNG. ALLE MODELLE SIND EINGETRAGEN.

OTY SE RÉSERVE LE DROIT D'APPORTER UNE QUELCONQUE MODIFICATION À LES MODÈLES SANS PRÉAVIS. TOUS NOUS MODÈLES SONT DÉPOSÉS.

OTY SE RESERVA EL DERECHO DE REALIZAR CUALQUIER MODIFICACIÓN SOBRE SUS MODELOS SIN PREVIO AVISO. TODOS LOS MODELOS HAN SIDO DEPOSITADOS.

Oty s.r.l.

via Spangaro 8/a
30030 Peseggia di Scorzé
(Venezia) Italy

www.otylight.com
e-mail: info@otylight.com
t. +39 (0)41 5830499
f. +39 (0)41 5830520